

One-Of-A-Kind Townhome in the heart of Graduate Hospital!

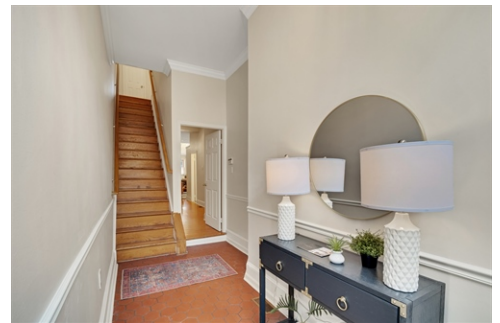
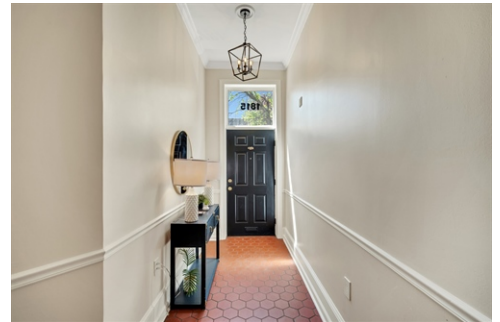


\$ 875,000



1815 Pemberton St, Philadelphia, PA 19146

- » Beds: 3 | Baths: 3 Full
- » Single Family
- » 1st floor features the garage with storage space above plus an oversized bedroom suite
- » 2nd level features back bedroom with 3 oversized windows & 2 large closets.
- » Hallway has both a laundry and a linen closet and the hall bathroom
- » More Info: 1815PembertonSt.com



Eric Fox
(267) 625-4504 (Eric Cell)
eric@efoxhomes.com
<http://www.efoxhomes.com>



THE ERIC FOX TEAM

Compass
1430 Walnut Street
3rd Floor
Philadelphia, PA 19102
(267) 435-8015

Don't miss this fabulous opportunity to own a one-of-a-kind townhome with one car garage parking on a gorgeous, tree-lined street in the heart of Graduate Hospital! The first floor of this unique townhome features the garage with storage space above plus an oversized first floor bedroom suite which covers the entire footprint of the property. This room is large enough for a sitting area, a sleeping area, and an office area. Over the years this space has been used as an in-law suite as it has a full bathroom with stand up shower and tons of closet space. It has also been used as an additional playroom/den and could easily be updated to a self contained unit with the installation of a small kitchenette. The second level features an extremely spacious back bedroom with three oversized windows facing a picture perfect city view. This room also has two large closets. The hallway has both a laundry and a linen closet and provides access to the recently updated hall bathroom with bathtub/shower combination and a modern vanity. The front bedroom is the primary suite and features two large closets and a full bathroom with shower stall and an additional linen closet. The top floor is where the real magic starts! Walk up to the wide open kitchen, dining and living room space with high ceilings, tons of natural light from both northern and southern exposures and an oversized picture window looking out at the perfect city skyline view and the trex deck. The tastefully done kitchen has been updated with butcher block countertop and subway tile backsplash and stainless steel appliances. The spacious living room features a

